

Reliability in Action



Customer service is first priority

SDLG focuses on delivering outstanding customer service throughout a machine's life cycle. Its integrated service management system monitors and analyzes the machine's functions to ensure that it is working at optimum capacity, while service alerts notify customers about forthcoming maintenance checks. SDLG's attention to detail is one of the ways it continues to be the industry's No. 1 in terms of customer service satisfaction.

Value-added service

SDLG's aftercare promise guarantees high quality service and offers experts who are on-hand to answer any questions or to solve problems. SDLG's service team uses advanced technology to support its maintenance checks in the field. Moreover, it aims to work with customers to define an efficient business solution.

Global service network

SDLG's worldwide service and spare parts network provides fast, efficient and professional round-the-clock service, anytime, anywhere. SDLG exceeds customers' expectations.



<http://sea.sdlg.com>



L956F
Wheel Loader

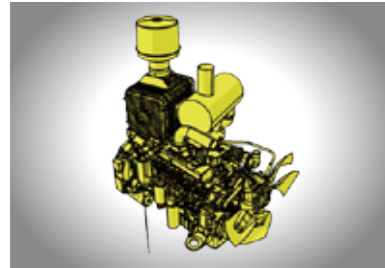


L956F Wheel Loader

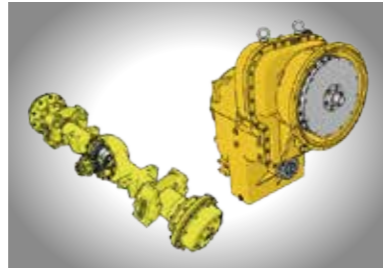
L956F is a general purpose energy saving wheel loader, with high reliability, large breakout force and tipping load, steady traveling performance.

Reliable

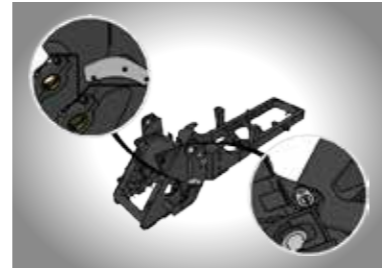
Low-speed high-torque engine, with strong power and high reliability.



Equipped with SDLG's own-made transmission and reinforced drive axles.

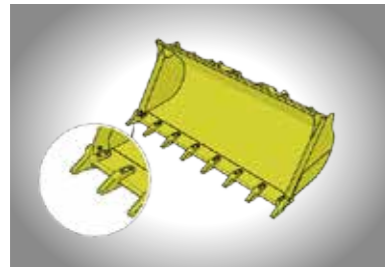


Adopt reinforced front and rear frames, with high strength and long life. The articulated points adopt tapered roller bearing and knuckle bearing to better adapt to harsh working conditions.



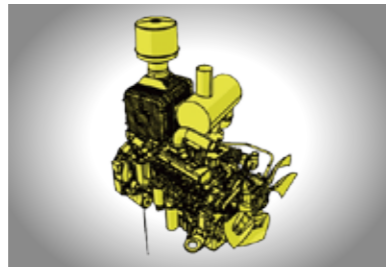
Reliable

The bucket main cutting plate uses trapezoidal wear-resistant steel structure, while the bottom wearing plate adopts thickened concave structure, with low insertion resistance and better wear resistance.



Convenient

The engine is fitted with standard malfunction diagnostic interface, easy to check and maintain.

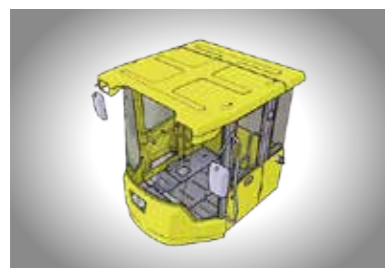


The electric system central control, easy to test and repair.



Comfortable

15% increased space, enhanced sealing, spacious and bright, quiet and comfortable.



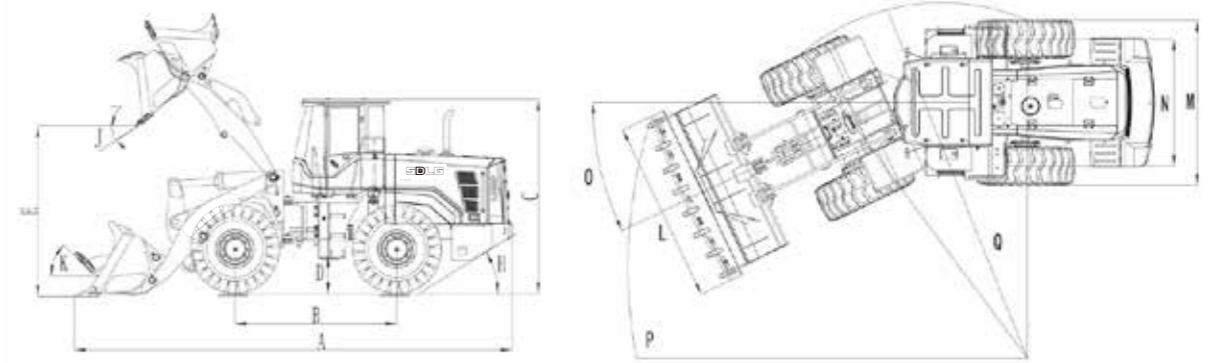
The digital panel display have real time malfunctions indicators, with high human-machine interactivity.



Adopted load-sensing full-hydraulic steering system; the duplex steering pump can realize automatic stepped-variable control, with high energy-saving, steady and comfortable operations.



Main performance and parts specifications



Item	Specifications
Overall dimension	
LxWxH (AxLxC)	8180×3024×3423 mm
Wheel base (B)	3200 mm
Min.ground clearance (D)	534 mm
Max.dumping height (E)	3040mm
Lifting height	4080mm
Dumping distance (G)	1095 mm
Dumping angle (J)	-45°
Bucket rollback at ground level	43°
Overall width (outside of rear wheel M)	2845 mm
Wheel tread (N)	2250 mm
Steering angle (O)	35°
Horizontal crossing radius (P)	7230 mm
Min.turning radius (Q)	6325 mm
Overall parameters	
Bucket capacity	3.0m ³ (2.7-4.5)
Rated load	5000 kg
Operating weight	17200 kg
Max.tractive force	165 kN
Max.breakout force	≥175kN
Tipping load	110 kN
Engine	
Model	WD10G220E23
Type	Inline, water-cooled, dry cylinder liner, direct injection
Rated power	162 kW
Rated speed	2000 r/min
Engine displacement	9726 ml

Item	Specifications
Cylinder bore/stroke	126/130 mm
Max.torque	980 N.m
Emission standard	GB20891-2007 (China Phase II)
Min.fuel-consume ratio	≤215 g/kw.h
Transmission system	
Torque converter	Single-stage four-element single-turbine hydraulic torque converter
Transmission type	Planetary power shift
Gears	Forward 2 reverse 1
Speed at forward gear I	0~13 km/h
Speed at forward gear II	0~38 km/h
Speed at reverse gear III	0~17 km/h
Hydraulic system of working device	
Type	Hydraulic pilot control
Total time	≤10.0 s
Brake system	
Service brake type	Air over hydraulic caliper disc brake
Parking brake type	Electro-hydraulic control
Steering system	
Electro-hydraulic control internal expanding shoe brake	
Type	Load sensing full hydraulic articulated steering
System pressure	16 MPa
Fill Capacity	
Fuel	260 L
Hydraulic oil	240 L
Engine	20 L
Transmission	45 L
Drive axle	2×26L
Braking system	4 L

* The right of final interpretation of the abovementioned parameters shall be reserved by SDLG. No further notice will be given in case of any change. Illustrations in the text may not always be the standard illustrations for this model.